

Stone GW, McLaurin BT, Cox DA, et al for the ACUITY Investigators. Bivalirudin for patients with acute coronary syndromes. N Engl J Med 2006;355:2203-2216. So what's the deal with Angiomax? How did this direct anti-thrombin agent make it on our blue card? Guidelines recommend the use of ASA, plavix, GIIb/IIIa inhibitor and unfractionated or low-molecular weight heparin for ACS patients who are to undergo PCI. REPLACE-2 showed that replacing heparin and GIIb/IIIa with Angiomax, or bivalirudin, monotherapy in low risk patients for elective PCI could provide similar benefit as above therapy, but with reduced bleeding. ACUITY, headed by our own Dr. Gregg Stone, shows this to be true when also used in ACS patients with high risk unstable angina or NSTEMIs. Patients included had unstable angina within 24 hours of admission with NSTEMIs or increase in cardiac enzymes. Important exclusion criteria were STEMIs, recent anti-coagulation therapy, or Cr clearance <30. Patients were randomized to heparin or enoxaparin plus GPIIb/IIIa inhibitor, bivalirudin plus GPIIb/IIIa inhibitor, or bivalirudin monotherapy. All patients had angiography within 72 hours and were then triaged to PCI (56%), CABG (11%) or medical management (33%). Patients had an average age of 63, 59% were classified as having NSTEMIs and 41% unstable angina, and while almost all received ASA prior to catheterization, only a little over of 60% got plavix. Angiomax with GPIIb/IIIa vs. heparin with GPIIb/IIIa resulted in similar rates of primary endpoints (death from any cause, MI, unplanned revascularization or major bleeding). However, Angiomax monotherapy when compared to the latter showed non-inferior rates of ischemia, but significant reduced rates of bleeding (3% vs. 5.7%, RR 0.53, CI 0.43-0.65). Thus, ACUITY suggests that replacing heparin and GPIIb/IIIa with bivalirudin monotherapy provides the same benefit in reducing ischemia events with a reduction in the important risk of bleeding. For a very good critique of the study check out: N Engl J Med. 2006;355:2249-50.

ORIGINAL ARTICLE

Bivalirudin for Patients with Acute Coronary Syndromes

Gregg W. Stone, M.D., Brent T. McLaurin, M.D., David A. Cox, M.D., Michel E. Bertrand, M.D., A. Michael Lincoff, M.D., Jeffrey W. Moses, M.D., Harvey D. White, M.D., Stuart J. Pocock, Ph.D., James H. Ware, Ph.D., Frederick Feit, M.D., Antonio Colombo, M.D., Philip E. Aylward, M.D., Angel R. Cequier, M.D., Harald Darius, M.D., Walter Desmet, M.D., Ramin Ebrahimi, M.D., Martial Hamon, M.D., Lars H. Rasmussen, M.D., Hans-Jürgen Rupprecht, M.D., James Hoekstra, M.D., Roxana Mehran, M.D., and E. Magnus Ohman, M.D., for the ACUITY Investigators*

ABSTRACT

BACKGROUND

Current guidelines for patients with moderate- or high-risk acute coronary syndromes recommend an early invasive approach with concomitant antithrombotic therapy, including aspirin, clopidogrel, unfractionated or low-molecular-weight heparin, and glycoprotein IIb/IIIa inhibitors. We evaluated the role of thrombin-specific anticoagulation with bivalirudin in such patients.

METHODS

We assigned 13,819 patients with acute coronary syndromes to one of three antithrombotic regimens: unfractionated heparin or enoxaparin plus a glycoprotein IIb/IIIa inhibitor, bivalirudin plus a glycoprotein IIb/IIIa inhibitor, or bivalirudin alone. The primary end points were a composite ischemia end point (death, myocardial infarction, or unplanned revascularization for ischemia), major bleeding, and the net clinical outcome, defined as the combination of composite ischemia or major bleeding.

RESULTS

Bivalirudin plus a glycoprotein IIb/IIIa inhibitor, as compared with heparin plus a glycoprotein IIb/IIIa inhibitor, was associated with noninferior 30-day rates of the composite ischemia end point (7.7% and 7.3%, respectively), major bleeding (5.3% and 5.7%), and the net clinical outcome end point (11.8% and 11.7%). Bivalirudin alone, as compared with heparin plus a glycoprotein IIb/IIIa inhibitor, was associated with a noninferior rate of the composite ischemia end point (7.8% and 7.3%, respectively; $P=0.32$; relative risk, 1.08; 95% confidence interval [CI], 0.93 to 1.24) and significantly reduced rates of major bleeding (3.0% vs. 5.7%; $P<0.001$; relative risk, 0.53; 95% CI, 0.43 to 0.65) and the net clinical outcome end point (10.1% vs. 11.7%; $P=0.02$; relative risk, 0.86; 95% CI, 0.77 to 0.97).

CONCLUSIONS

In patients with moderate- or high-risk acute coronary syndromes who were undergoing invasive treatment with glycoprotein IIb/IIIa inhibitors, bivalirudin was associated with rates of ischemia and bleeding that were similar to those with heparin. Bivalirudin alone was associated with similar rates of ischemia and significantly lower rates of bleeding. (ClinicalTrials.gov number, NCT00093158.)

From Columbia University Medical Center and the Cardiovascular Research Foundation, New York (G.W.S., J.W.M., R.M.); AnMed Health, Anderson, SC (B.T.M.); Mid Carolina Cardiology, Charlotte, NC (D.A.C.); Hôpital Cardiologique, Lille, France (M.E.B.); Cleveland Clinic, Cleveland (A.M.L.); Auckland City Hospital, Auckland, New Zealand (H.D.W.); London School of Hygiene and Tropical Medicine, London (S.J.P.); Harvard University, Boston (J.H.W.); New York University School of Medicine, New York (F.F.); Ospedale San Raphael, Milan (A.C.); Flinders Medical Center, Adelaide, Australia (P.E.A.); Hospital Universitari de Bellvitge, Barcelona (A.R.C.); Krankenhaus Neukölln, Berlin (H.D.); University Hospital, Gasthuisberg, Leuven, Belgium (W.D.); UCLA and the Greater Los Angeles Veterans Affairs Medical Center, Los Angeles (R.E.); University Hospital, Normandy, France (M.H.); Aarhus University Hospital, Aalborg Hospital, Aalborg, Denmark (L.H.R.); GPR Klinikum Rüsselsheim, Rüsselsheim, Germany (H.-J.R.); Wake Forest University, Winston-Salem, NC (J.H.); and Duke University Medical Center, Durham, NC (E.M.O.). Address reprint requests to Dr. Stone at Columbia University Medical Center, Cardiovascular Research Foundation, 111 E. 59th St., 11th Fl., New York, NY 10022, or at gs2184@columbia.edu.

*The names of the participants in the Acute Catheterization and Urgent Intervention Triage Strategy (ACUITY) trial appear in the Supplementary Appendix (available with the full text of this article at www.nejm.org).

N Engl J Med 2006;355:2203-16.

Copyright © 2006 Massachusetts Medical Society.

MORE THAN 1.4 MILLION PERSONS ARE admitted to hospitals in the United States every year with acute coronary syndromes (e.g., unstable angina or myocardial infarction without ST-segment elevation).¹ An early invasive strategy for patients with moderate- or high-risk acute coronary syndromes, consisting of angiography followed by percutaneous coronary intervention (PCI), coronary-artery bypass grafting (CABG), or medical management, results in higher rates of event-free survival than does conservative care² and is recommended by the American Heart Association, the American College of Cardiology, and the European Society of Cardiology.³⁻⁵ Aspirin, clopidogrel, a platelet glycoprotein IIb/IIIa inhibitor, and an antithrombotic agent (either unfractionated or low-molecular-weight heparin) are also recommended for patients for whom an invasive strategy is chosen.³⁻⁵ Nonetheless, the rates of death and myocardial infarction remain considerable, and this intensive adjunctive pharmacologic regimen results in frequent hemorrhagic complications that have been independently associated with early and late mortality rates.⁶⁻⁸

Bivalirudin (Angiomax, the Medicines Company) is a direct-acting synthetic antithrombotic agent that has been approved as an alternative to unfractionated heparin for patients with acute coronary syndromes who are undergoing PCI. In the Randomized Evaluation in PCI Linking Angiomax to Reduced Clinical Events 2 (REPLACE-2) trial, bivalirudin monotherapy, as compared with unfractionated heparin plus glycoprotein IIb/IIIa inhibitors, resulted in a significant reduction in rates of major and minor bleeding (as defined in the trial), with similar rates of ischemic events and death among patients with stable or unstable angina who were undergoing PCI.^{9,10} We examined the usefulness of bivalirudin as part of an early invasive strategy with optimal antiplatelet therapy in patients with acute coronary syndromes.

METHODS

STUDY DESIGN

The Acute Catheterization and Urgent Intervention Triage Strategy (ACUITY) trial was a prospective, open-label, randomized, multicenter trial in which we compared heparin plus a glycoprotein IIb/IIIa inhibitor, bivalirudin plus a glycoprotein IIb/IIIa inhibitor, and bivalirudin alone in patients with moderate- or high-risk acute coronary syndromes who

were undergoing an early invasive strategy. The study protocol has been described previously in detail.¹¹ The trial was sponsored by the Medicines Company and Nycomed.

The study was designed by Drs. Stone, Bertrand, Lincoff, Moses, Ohman, White, Pocock, and Ware in collaboration with the sponsors. The execution of the study was supervised by the sponsors in collaboration with the executive and steering committees (see the Supplementary Appendix, available with the full text of this article at www.nejm.org). Dr. Stone had full access to the entire study database and prepared the manuscript. Data analysis was performed by the study sponsors but was independently confirmed by the Cardiovascular Research Foundation, an affiliate of Columbia University Medical Center. Dr. Stone vouches for the accuracy and completeness of the data.

PATIENTS

Patients 18 years of age or older with symptoms of unstable angina lasting at least 10 minutes within the preceding 24 hours were eligible for enrollment if one or more of the following criteria were met: new ST-segment depression or transient elevation of at least 1 mm; elevations in the troponin I, troponin T, or creatine kinase MB levels; known coronary artery disease; or all four other variables for predicting Thrombolysis in Myocardial Infarction (TIMI) risk scores for unstable angina.¹² Exclusion criteria were myocardial infarction associated with acute ST-segment elevation or shock; bleeding diathesis or major bleeding episode within 2 weeks before the episode of angina; thrombocytopenia; a calculated creatinine clearance rate of less than 30 ml per minute; recent administration of abciximab, warfarin, fondaparinux, fibrinolytic agents, bivalirudin, or two or more doses of low-molecular-weight heparin; and allergy to any of the study drugs or to iodinated contrast medium that could not be controlled in advance with medication. The study was approved by the institutional review board or ethics committee at each participating center, and all patients provided written, informed consent.

RANDOMIZATION AND STUDY PROTOCOL

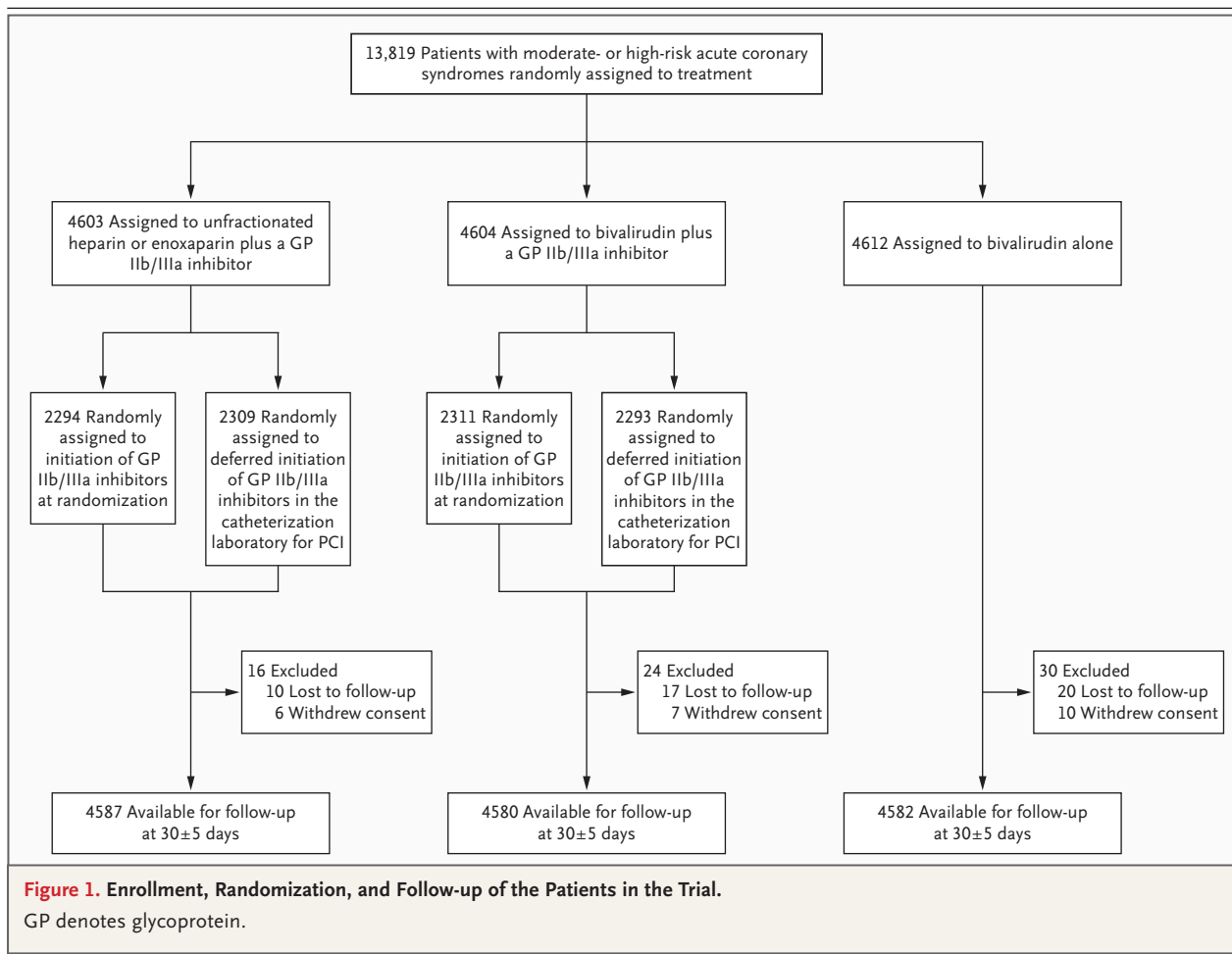
Telephone randomization was performed in blocks of six, stratified according to the site and the use of or intent to administer a thienopyridine before angiography. Patients were assigned equally in open-label fashion to one of the following three

antithrombotic regimens that were started immediately after randomization: heparin plus a glycoprotein IIb/IIIa inhibitor (the control group), bivalirudin plus a glycoprotein IIb/IIIa inhibitor, or bivalirudin alone (Fig. 1). Either unfractionated heparin or enoxaparin was allowed in the control group. However, each site was required to prespecify one agent and then use it exclusively, unless one of the types of heparin had been administered before randomization, in which case that same agent was continued in order to minimize crossovers.¹³

Detailed antithrombotic dosing recommendations for the trial have been described previously.¹¹ Unfractionated heparin was administered as an intravenous bolus of 60 IU per kilogram of body weight plus an infusion of 12 IU per kilogram per hour to achieve an activated partial-thromboplastin time of 50 to 75 seconds before angiography and an activated clotting time of 200 to 250 seconds during PCI. One milligram of enoxaparin per kilogram was administered subcutaneously twice

a day before angiography. An intravenous bolus of an additional 0.3 mg per kilogram was administered before PCI if the most recent subcutaneous dose had been given more than 8 hours earlier, or an intravenous bolus of an additional 0.75 mg per kilogram was administered before PCI if the most recent subcutaneous dose had been given more than 16 hours earlier. Bivalirudin was begun before angiography, with an intravenous bolus of 0.1 mg per kilogram and an infusion of 0.25 mg per kilogram per hour.^{14,15} Before PCI, an additional intravenous bolus of 0.5 mg per kilogram was administered, and the infusion was increased to 1.75 mg per kilogram per hour.⁹ All antithrombotic agents were discontinued according to the protocol at the completion of angiography or PCI but could be continued at low doses at the discretion of the operator. Antithrombotic monitoring was not performed in patients who were treated with enoxaparin or bivalirudin.

Patients assigned to heparin plus glycoprotein



Ib/IIIa inhibitors or bivalirudin plus glycoprotein Ib/IIIa inhibitors were randomly assigned again in a two-by-two factorial design to treatment with glycoprotein Ib/IIIa inhibitors, in all patients immediately after randomization (the “upstream” group), or to deferred treatment with glycoprotein Ib/IIIa inhibitors, for use only in patients undergoing PCI starting in the cardiac catheterization laboratory (Fig. 1).¹⁶⁻¹⁹ The results of this subrandomization are not reported here; the results are reported with the upstream and deferred subgroups pooled. The use of glycoprotein Ib/IIIa inhibitors was permitted before angiography in patients with severe breakthrough ischemia who were randomly assigned to deferred glycoprotein Ib/IIIa inhibitor use or bivalirudin monotherapy and was also permitted during PCI in patients receiving bivalirudin monotherapy who had procedural complications.¹¹

Angiography was performed in all patients within 72 hours after randomization. Patients were then triaged to PCI, CABG, or medical management at the discretion of the physician. Aspirin, 300 to 325 mg orally or 250 to 500 mg intravenously, was administered daily during the initial hospitalization, followed by 75 to 325 mg daily indefinitely after discharge. The initial dose and timing of clopidogrel were left to the discretion of the investigator according to local standards, although a loading dose of 300 mg or more was recommended in all patients no later than 2 hours after PCI. A daily dose of 75 mg of clopidogrel was recommended for 1 year in all patients with coronary artery disease.

END POINTS

The following three primary 30-day end points, measured as cumulative events occurring within 25 to 35 days after randomization, were prespecified: a composite ischemia end point (death from any cause, myocardial infarction, or unplanned revascularization for ischemia), major bleeding (not related to CABG), and a net clinical outcome end point (defined as the occurrence of the composite ischemia end point or major bleeding). Definitions of the primary end points have been previously detailed.¹¹ Major bleeding was defined as the cumulative occurrence within 25 to 35 days after randomization of intracranial or intraocular bleeding, hemorrhage at the access site requiring intervention, hematoma with a diameter of at least 5 cm, a reduction in hemoglobin levels of at least 4 g per

deciliter without an overt bleeding source or at least 3 g per deciliter with such a source, reoperation for bleeding, or transfusion of a blood product. A clinical events committee that was unaware of the treatment assignments adjudicated all primary end-point events with the use of original source documents.

STATISTICAL ANALYSIS

The trial was powered for separate comparisons between the control group and each of the two investigational groups. We used sequential noninferiority and superiority analyses with hierarchical end-point testing, with the type I error controlled by the Benjamini and Hochberg procedure,²⁰ as previously described.¹¹ Noninferiority was declared if the upper limit of the one-sided 97.5% confidence interval (CI) for the event rate in the investigational group did not exceed a relative margin of 25% from the event rate in the control group, equivalent to a one-sided test with an alpha value of 0.025. A two-sided alpha value of 0.05 was used for superiority testing.

The anticipated 30-day event rates for the composite ischemia end point, major bleeding, and the net clinical outcome end point were 6.5%, 9.0%, and 12.4%, respectively, in the control group; 5.3%, 7.5%, and 10.3%, respectively, in the group receiving bivalirudin plus glycoprotein Ib/IIIa inhibitors; and 6.5%, 6.0%, and 10.5%, respectively, in the group receiving bivalirudin alone.¹¹ For the comparison of bivalirudin plus glycoprotein Ib/IIIa inhibitors with heparin plus glycoprotein Ib/IIIa inhibitors, with 4600 patients in each group, the trial had more than 99% statistical power to demonstrate noninferiority for the three primary end points and 88% power to demonstrate superiority for the net clinical outcome end point. For the comparison of bivalirudin alone with heparin plus glycoprotein Ib/IIIa inhibitors, the trial had 87% power to demonstrate noninferiority for the composite ischemia end point, 99% power to demonstrate both noninferiority and superiority for major bleeding, and 99% and 81% power to demonstrate noninferiority and superiority, respectively, for the net clinical outcome end point.

Categorical variables were compared with the chi-square test or Fisher's exact test. Continuous variables were compared with the nonparametric Wilcoxon rank-sum test. Time-to-event distributions were displayed according to the Kaplan–Meier method and were compared with the use of the

log-rank test. All outcomes were evaluated by intention-to-treat analyses.

RESULTS

PATIENTS

Between August 23, 2003, and December 5, 2005, we enrolled 13,819 patients with acute coronary syndromes at 450 centers in 17 countries. Baseline characteristics were well balanced among the study groups (Table 1). The median age of the patients

was 63 years, and 70% were men. Myocardial infarction without ST-segment elevation (elevated baseline creatine kinase MB or troponin levels) was present in 59% of patients, whereas 41% had unstable angina.

Angiography was performed during the initial hospitalization in 99% of patients at a median of 19.6 hours after admission, after which 56% of the patients underwent PCI, 11% underwent CABG, and 33% received medical therapy (Table 2). Stents were used in 93% of patients undergoing PCI, 65%

Table 1. Baseline Characteristics of the Patients.

| Characteristic | Unfractionated Heparin or Enoxaparin plus Glycoprotein IIb/IIIa Inhibitors (N=4603) | Bivalirudin plus Glycoprotein IIb/IIIa Inhibitors (N=4604) | Bivalirudin Alone (N=4612) |
|---|---|--|----------------------------|
| Age — yr | | | |
| Median | 63 | 63 | 63 |
| Range | 23–91 | 21–95 | 20–92 |
| Weight — kg | | | |
| Median | 83 | 83 | 84 |
| Interquartile range | 73–95 | 73–95 | 73–96 |
| Male sex — no. (%) | 3249 (70.6) | 3218 (69.9) | 3195 (69.3) |
| Medical history — no./total no. (%) | | | |
| Diabetes | 1298/4564 (28.4) | 1267/4568 (27.7) | 1287/4577 (28.1) |
| Insulin-requiring diabetes | 389/4564 (8.5) | 396/4568 (8.7) | 408/4577 (8.9) |
| Hypertension | 3058/4577 (66.8) | 3074/4577 (67.2) | 3080/4593 (67.1) |
| Hyperlipidemia | 2580/4511 (57.2) | 2588/4508 (57.4) | 2579/4521 (57.0) |
| Current smoker | 1308/4508 (29.0) | 1323/4522 (29.3) | 1312/4527 (29.0) |
| Myocardial infarction | 1419/4493 (31.6) | 1372/4491 (30.5) | 1431/4499 (31.8) |
| Percutaneous coronary intervention | 1780/4567 (39.0) | 1720/4554 (37.8) | 1820/4562 (39.9) |
| Coronary-artery bypass grafting | 834/4588 (18.2) | 801/4592 (17.4) | 830/4594 (18.1) |
| Renal insufficiency* | 826/4298 (19.2) | 824/4303 (19.1) | 818/4339 (18.9) |
| Elevation of cardiac biomarker levels — no./total no. (%) | 2503/4213 (59.4) | 2479/4238 (58.5) | 2570/4263 (60.3) |
| Elevation of troponin levels — no./total no. (%) | 2290/3931 (58.3) | 2276/3982 (57.2) | 2349/3971 (59.2) |
| ST-segment deviation ≥1 mm — no./total no. (%) | 1618/4598 (35.2) | 1628/4599 (35.4) | 1579/4607 (34.3) |
| Elevation of cardiac biomarker levels or ST-segment deviation ≥1 mm — no./total no. (%) | 3171/4340 (73.1) | 3119/4362 (71.5) | 3173/4385 (72.4) |
| TIMI risk score — no./total no. (%)† | | | |
| 0–2 | 654/4070 (16.1) | 630/4090 (15.4) | 637/4077 (15.6) |
| 3–4 | 2184/4070 (53.7) | 2269/4090 (55.5) | 2223/4077 (54.5) |
| 5–7 | 1232/4070 (30.3) | 1191/4090 (29.1) | 1217/4077 (29.9) |

* Renal insufficiency was defined as a calculated creatinine clearance rate of less than 60 ml per minute as determined by the Cockcroft–Gault equation.

† Thrombolysis in Myocardial Infarction (TIMI) risk scores assess the prognosis for patients with acute coronary syndromes; higher scores indicate greater risk.¹²

Table 2. Procedures and Study Medications.

| Variable | Unfractionated Heparin or Enoxaparin plus Glycoprotein IIb/IIIa Inhibitors (N = 4603) | Bivalirudin plus Glycoprotein IIb/IIIa Inhibitors (N = 4604) | Bivalirudin Alone (N = 4612) |
|---|---|--|------------------------------|
| Angiography performed — no. (%) | 4565 (99.2) | 4547 (98.8) | 4561 (98.9) |
| Hours from admission to angiography — median (interquartile range)* | 19.7 (7.0–29.3) | 19.5 (7.0–28.2) | 19.8 (7.3–29.0) |
| Hours from admission to randomization — median (interquartile range) | 6.1 (2.0–15.5) | 6.0 (2.0–15.4) | 6.0 (2.0–15.1) |
| Hours from randomization to initiation of antithrombotic study drug — median (interquartile range)† | 0.4 (0.1–0.9) | 0.7 (0.4–1.1) | 0.6 (0.3–1.0) |
| Hours from antithrombotic study drug to angiography — median (interquartile range)† | 4.0 (1.2–18.1) | 3.5 (0.9–18.2) | 3.9 (1.0–19.0) |
| Hours from antithrombotic study drug to PCI — median (interquartile range)† | 4.1 (1.5–19.0) | 3.9 (1.3–19.0) | 4.1 (1.4–20.0) |
| Treatment strategy — no. (%) | | | |
| PCI | 2561 (55.6) | 2609 (56.7) | 2619 (56.8) |
| Coronary-artery bypass grafting | 549 (11.9) | 499 (10.8) | 491 (10.6) |
| Medical management | 1493 (32.4) | 1496 (32.5) | 1502 (32.6) |
| Antithrombotic medications — no. (%) | | | |
| Before randomization | | | |
| Unfractionated heparin | 1910 (41.5) | 1858 (40.4) | 1870 (40.5) |
| Low-molecular-weight heparin | 1209 (26.3) | 1144 (24.8) | 1172 (25.4) |
| After randomization and before angiography | | | |
| Unfractionated heparin | 2206 (47.9) | 82 (1.8) | 66 (1.4) |
| Enoxaparin | 2182 (47.4) | 17 (0.4) | 20 (0.4) |
| Bivalirudin | 6 (0.1) | 4420 (96.0) | 4471 (96.9) |
| Antiplatelet medications | | | |
| Aspirin before angiography or PCI — no./total no. (%) | 4446/4535 (98.0) | 4427/4528 (97.8) | 4441/4535 (97.9) |
| Thienopyridine before angiography or PCI — no./total no. (%) | 2842/4526 (62.8) | 2924/4520 (64.7) | 2911/4531 (64.2) |
| Clopidogrel | 2819/4527 (62.3) | 2904/4520 (64.2) | 2897/4531 (63.9) |
| Ticlopidine | 42/4534 (0.9) | 36/4524 (0.8) | 31/4531 (0.7) |

of whom received drug-eluting stents. In the control group, after randomization, unfractionated heparin and enoxaparin were selected with similar frequencies. The median maximum activated clotting time among patients undergoing PCI with unfractionated heparin was 239 seconds (interquartile range, 211 to 291).

Glycoprotein IIb/IIIa inhibitors were used during PCI in 9.1% of patients treated with bivalirudin alone (for procedural complications in 6.5%). The most common procedural complications leading to the use of glycoprotein IIb/IIIa inhibitors were the presence of new or suspected thrombus, slow flow (TIMI flow grade 2), or no reflow (TIMI flow grade 0 or 1).

IN-HOSPITAL ADVERSE EVENTS

On the basis of on-site reporting without central adjudication, the most frequent nonprocedural adverse events during the initial hospitalization were chest pain (3.6% of patients), headache (3.1%), back pain (2.8%), and nausea (2.3%), which occurred with similar frequency in the three trial groups. Procedural complications were reported more frequently in the group assigned to bivalirudin alone than in the other two groups, a finding that was consistent with the protocol-specified requirement to provide an indication for provisional use of glycoprotein IIb/IIIa inhibitors. Blinded angiographic analyses performed at a core laboratory showed no significant differences in the incidence, nature, or

Table 2. (Continued.)

| Variable | Unfractionated Heparin or Enoxaparin plus Glycoprotein IIb/IIIa Inhibitors (N=4603) | Bivalirudin plus Glycoprotein IIb/IIIa Inhibitors (N=4604) | Bivalirudin Alone (N=4612) |
|--|---|--|----------------------------|
| Glycoprotein IIb/IIIa inhibitor before randomization — no. (%) | 374 (8.1) | 350 (7.6) | 307 (6.7) |
| Eptifibatide | 222 (4.8) | 213 (4.6) | 193 (4.2) |
| Tirofiban | 154 (3.3) | 136 (3.0) | 114 (2.5) |
| Abciximab | 13 (0.3) | 10 (0.2) | 9 (0.2) |
| Glycoprotein IIb/IIIa inhibitor after randomization and before angiography — no. (%)‡ | 2305 (50.1) | 2248 (48.8) | 31 (0.7) |
| Eptifibatide | 1486 (32.3) | 1448 (31.5) | 19 (0.4) |
| Tirofiban | 802 (17.4) | 784 (17.0) | 11 (0.2) |
| Abciximab | 17 (0.4) | 16 (0.3) | 1 (<0.1) |
| Glycoprotein IIb/IIIa inhibitor during PCI — no./total no. (%) | 2473/2561 (96.6) | 2523/2609 (96.7) | 238/2619 (9.1) |
| Eptifibatide | 1526/2561 (59.6) | 1588/2609 (60.9) | 119/2619 (4.5) |
| Tirofiban | 492/2561 (19.2) | 513/2609 (19.7) | 20/2619 (0.8) |
| Abciximab | 455/2561 (17.8) | 425/2609 (16.3) | 99/2619 (3.8) |
| Medications taken regularly after hospital discharge through 30 days — no./total no. (%) | | | |
| Aspirin | 4088/4411 (92.7) | 4076/4388 (92.9) | 4094/4394 (93.2) |
| Thienopyridine | 2940/4411 (66.7) | 3012/4388 (68.6) | 3013/4394 (68.6) |
| Beta-blocker | 3363/4411 (76.2) | 3387/4388 (77.2) | 3361/4394 (76.5) |
| Angiotensin converting-enzyme inhibitor or angiotensin-receptor blocker | 2589/4411 (58.7) | 2619/4388 (59.7) | 2642/4394 (60.1) |
| Statin | 3530/4411 (80.0) | 3510/4388 (80.0) | 3549/4394 (80.8) |

* Data are not normally distributed, so median durations of the subgroups of hours from admission to angiography do not add up to the median duration of the total hours from admission to angiography.

† This category includes patients who were not receiving an antithrombotic agent before randomization.

‡ This category includes patients in whom the glycoprotein IIb/IIIa inhibitor was administered before randomization.

angiographic outcome of procedural complications among the three groups.

CLINICAL OUTCOMES

Bivalirudin plus glycoprotein IIb/IIIa inhibitors, as compared with heparin plus glycoprotein IIb/IIIa inhibitors, resulted in noninferior 30-day rates of the composite ischemia end point (7.7% and 7.3%, respectively; $P=0.39$; relative risk, 1.07; 95% CI, 0.92 to 1.23), major bleeding (5.3% and 5.7%; $P=0.38$; relative risk, 0.93; 95% CI, 0.78 to 1.10), and the net clinical outcome end point (11.8% and 11.7%; $P=0.93$; relative risk, 1.01; 95% CI, 0.90 to 1.12). Bivalirudin alone, as compared with heparin plus glycoprotein IIb/IIIa inhibitors, resulted in a noninferior rate of the composite ischemia end point (7.8% and 7.3%, respectively; $P=0.32$; relative

risk, 1.08; 95% CI, 0.93 to 1.24), a significantly reduced rate of major bleeding (3.0% and 5.7%; $P<0.001$; relative risk, 0.53; 95% CI, 0.43 to 0.65), and a reduced rate of the net clinical outcome end point (10.1% and 11.7%; $P=0.02$; relative risk, 0.86; 95% CI, 0.77 to 0.97) (Table 3 and Fig. 2). Bivalirudin monotherapy also decreased the rates of bleeding from any cause (including bleeding related to CABG), minor bleeding, major and minor bleeding according to the TIMI scale, and blood transfusion (Table 3).

The treatment effects of bivalirudin monotherapy were consistent among multiple prespecified subgroups, including patients who had positive tests for biomarkers, those undergoing PCI, those who were randomly assigned to immediate or deferred treatment with glycoprotein IIb/IIIa in-

Table 3. Clinical Outcomes at 30 Days.*

| Outcome | Unfractionated Heparin or Enoxaparin plus Glycoprotein IIb/IIIa Inhibitors (N=4603) | Bivalirudin plus Glycoprotein IIb/IIIa Inhibitors (N=4604) | Risk Ratio (95% CI) | P Value | Bivalirudin Alone (N=4612) | Risk Ratio (95% CI)† | P Value‡ |
|--|---|--|---------------------|-----------------|----------------------------|----------------------|-------------------|
| Net clinical outcome — no. (%) | 538 (11.7) | 541 (11.8) | 1.01 (0.90–1.12) | <0.001‡ 0.93 | 466 (10.1) | 0.86 (0.77–0.97) | <0.001‡ 0.015 |
| Composite ischemia — no. (%) | 334 (7.3) | 356 (7.7) | 1.07 (0.92–1.23) | 0.007‡ 0.39 | 360 (7.8) | 1.08 (0.93–1.24) | 0.01‡ 0.32 |
| Death from any cause | 62 (1.3) | 70 (1.5) | | 0.48 | 74 (1.6) | | 0.31 |
| Myocardial infarction | 227 (4.9) | 229 (5.0) | | 0.93 | 248 (5.4) | | 0.33 |
| Q wave | 50 (1.1) | 44 (1.0) | | 0.53 | 50 (1.1) | | 0.99 |
| Non-Q wave | 177 (3.8) | 187 (4.1) | | 0.59 | 199 (4.3) | | 0.25 |
| Unplanned revascularization for ischemia | 105 (2.3) | 123 (2.7) | | 0.23 | 110 (2.4) | | 0.74 |
| Major bleeding (not related to CABG) — no. (%) | 262 (5.7) | 243 (5.3) | 0.93 (0.78–1.10) | <0.001‡ 0.38 | 139 (3.0) | 0.53 (0.43–0.65) | <0.001‡ <0.001 |
| Intracranial | 3 (<0.1) | 3 (<0.1) | | 1.00 | 3 (<0.1) | | 1.00 |
| Retropertitoneal | 24 (0.5) | 26 (0.6) | | 0.78 | 7 (0.2) | | 0.002 |
| Access-site hemorrhage | 117 (2.5) | 117 (2.5) | | 1.00 | 38 (0.8) | | <0.001 |
| Requiring intervention or surgery | 24 (0.5) | 28 (0.6) | | 0.58 | 14 (0.3) | | 0.10 |
| Hematoma ≥5 cm | 102 (2.2) | 101 (2.2) | | 0.94 | 32 (0.7) | | <0.001 |
| Hemoglobin decrease ≥3 g/dl with overt source | 102 (2.2) | 83 (1.8) | | 0.16 | 45 (1.0) | | <0.001 |
| Hemoglobin decrease ≥4 g/dl with no overt source | 39 (0.8) | 33 (0.7) | | 0.48 | 33 (0.7) | | 0.47 |
| Blood transfusion | 125 (2.7) | 119 (2.6) | | 0.70 | 75 (1.6) | | <0.001 |
| Reoperation for bleeding | 2 (<0.1) | 5 (0.1) | | 0.45 | 4 (0.1) | | 0.69 |
| All major bleeding — no. (%) | 543 (11.8) | 512 (11.1) | | 0.31 | 421 (9.1) | | <0.001 |
| Minor bleeding (not related to CABG) — no. (%)§ | 993 (21.6) | 1001 (21.7) | | 0.84 | 592 (12.8) | | <0.001 |
| Bleeding according to the TIMI scale — no. (%) | 306 (6.6) | 297 (6.5) | | 0.70 | 183 (4.0) | | <0.001 |
| Major | 86 (1.9) | 76 (1.7) | | 0.43 | 43 (0.9) | | <0.001 |
| Minor | 295 (6.4) | 281 (6.1) | | 0.54 | 170 (3.7) | | <0.001 |
| Acquired thrombocytopenia — no. (%)¶ | 511 (11.1) | 497 (10.8) | | 0.64 | 457 (9.9) | | 0.06 |

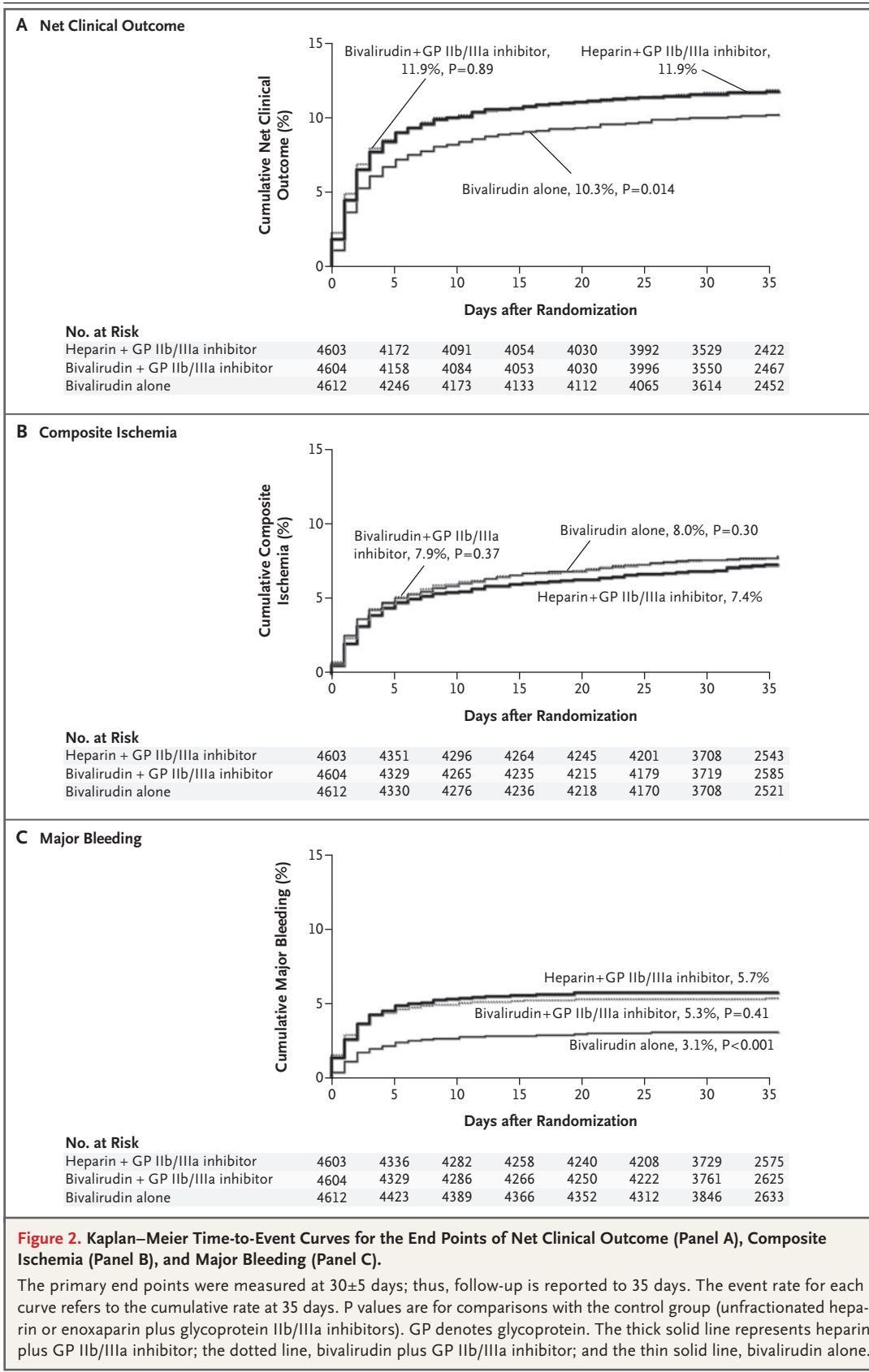
* All P values are two-sided and are for superiority, except where noted. CABG denotes coronary-artery bypass grafting, and TIMI Thrombolysis in Myocardial Infarction.

† The risk ratio and the P value are for the comparison of bivalirudin alone with unfractionated heparin or enoxaparin plus glycoprotein IIb/IIIa inhibitors.

‡ The P value is for noninferiority.

§ Types of minor bleeding included ecchymoses, epistaxis, gastrointestinal bleeding, genitourinary bleeding, bleeding at the puncture site, hemopericardial bleeding, pulmonary bleeding, and other.

¶ Acquired thrombocytopenia was defined as a platelet count of less than 150,000 per cubic millimeter in patients who did not have thrombocytopenia at baseline.



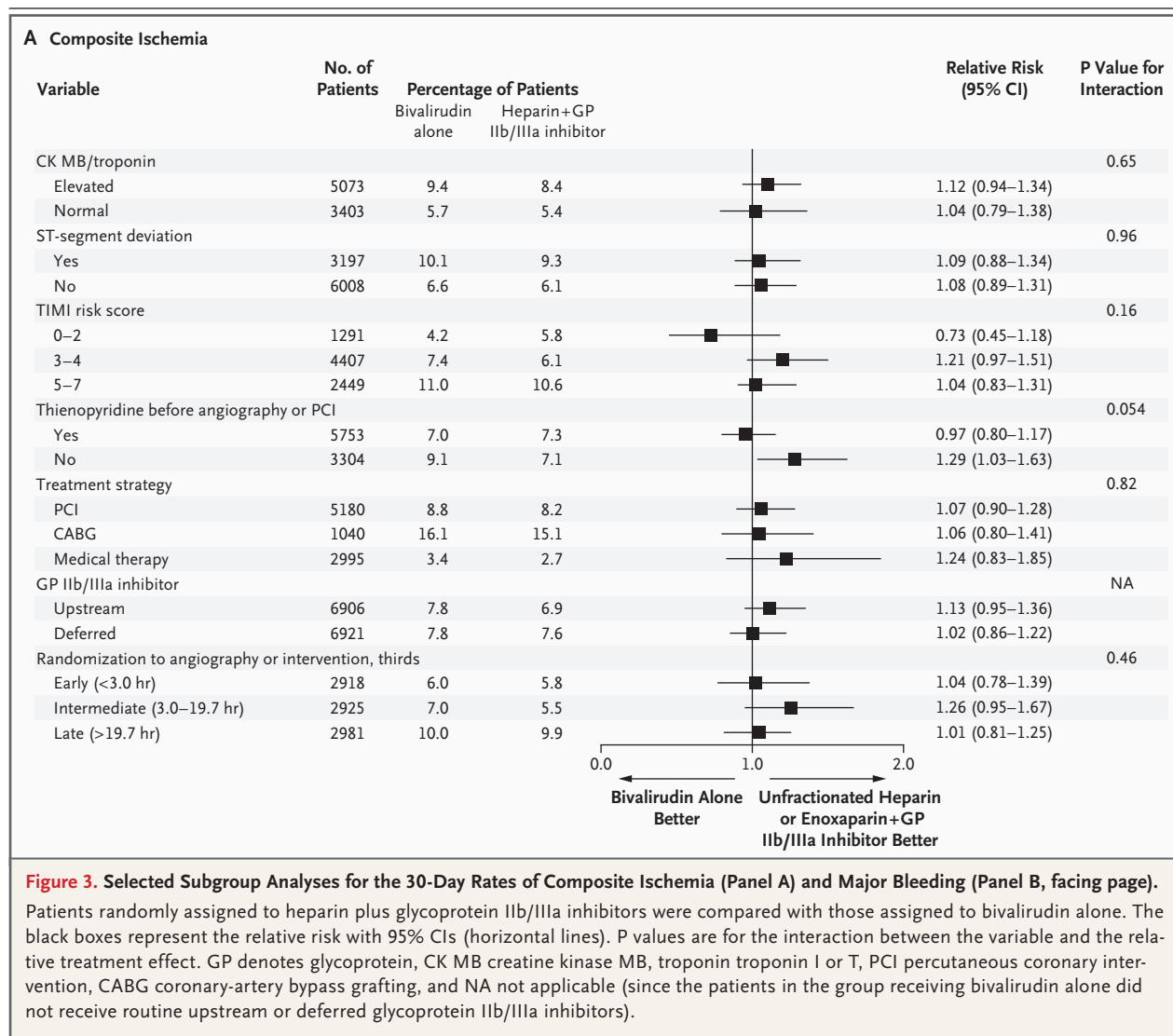


Figure 3. Selected Subgroup Analyses for the 30-Day Rates of Composite Ischemia (Panel A) and Major Bleeding (Panel B, facing page). Patients randomly assigned to heparin plus glycoprotein IIb/IIIa inhibitors were compared with those assigned to bivalirudin alone. The black boxes represent the relative risk with 95% CIs (horizontal lines). P values are for the interaction between the variable and the relative treatment effect. GP denotes glycoprotein, CK MB creatine kinase MB, troponin troponin I or T, PCI percutaneous coronary intervention, CABG coronary-artery bypass grafting, and NA not applicable (since the patients in the group receiving bivalirudin alone did not receive routine upstream or deferred glycoprotein IIb/IIIa inhibitors).

hibitors, and those who did not undergo early angiography (Fig. 3; see also the figure in the Supplementary Appendix). Among the 2472 patients who underwent angiography or intervention more than 24 hours after randomization (median, 45.0 hours; interquartile range, 28.4 to 69.2), bivalirudin monotherapy, as compared with heparin plus glycoprotein IIb/IIIa inhibitors, resulted in a similar rate of the composite ischemia end point (8.9% and 9.1%, $P=0.89$), a reduced rate of major bleeding (3.3% and 8.9%, $P<0.001$), and a reduced rate of the net clinical outcome end point (11.4% and 16.4%, $P=0.003$).

An interaction effect with borderline significance ($P=0.054$) was noted in only one subgroup analysis. Among patients receiving a thienopyri-

dine before angiography or PCI, ischemic events occurred with similar frequency in the bivalirudin monotherapy group and in the group assigned to heparin plus a glycoprotein IIb/IIIa inhibitor (7.0% and 7.3%, respectively; relative risk, 0.97; 95% CI, 0.80 to 1.17). In contrast, among patients who did not receive a thienopyridine before angiography or PCI, ischemic events were more frequent with bivalirudin monotherapy than with heparin plus a glycoprotein IIb/IIIa inhibitor (9.1% and 7.1%; relative risk, 1.29; 95% CI, 1.03 to 1.63). Bivalirudin monotherapy, as compared with heparin plus a glycoprotein IIb/IIIa inhibitor, reduced major bleeding regardless of whether patients were pretreated with a thienopyridine (Fig. 3).

Patients in the control group who received

| Variable | No. of Patients | Percentage of Patients | | Relative Risk (95% CI) | P Value for Interaction |
|--|-----------------|------------------------|-------------------------------|------------------------|-------------------------|
| | | Bivalirudin alone | Heparin+GP Iib/IIIa inhibitor | | |
| CK MB/troponin | | | | | 0.09 |
| Elevated | 5073 | 3.8 | 6.4 | 0.59 (0.46–0.75) | |
| Normal | 3403 | 1.8 | 4.8 | 0.38 (0.25–0.57) | |
| ST-segment deviation | | | | | 0.46 |
| Yes | 3197 | 3.9 | 6.7 | 0.58 (0.43–0.79) | |
| No | 6008 | 2.5 | 5.1 | 0.50 (0.38–0.65) | |
| TIMI risk score | | | | | 0.91 |
| 0–2 | 1291 | 2.5 | 5.4 | 0.47 (0.26–0.84) | |
| 3–4 | 4407 | 2.6 | 4.8 | 0.54 (0.39–0.74) | |
| 5–7 | 2449 | 4.1 | 7.5 | 0.54 (0.39–0.76) | |
| Thienopyridine before angiography or PCI | | | | | 0.53 |
| Yes | 5753 | 3.1 | 5.9 | 0.53 (0.41–0.68) | |
| No | 3304 | 2.9 | 4.8 | 0.60 (0.42–0.86) | |
| Treatment strategy | | | | | 0.90 |
| PCI | 5180 | 3.5 | 6.8 | 0.52 (0.40–0.66) | |
| CABG | 1040 | 2.0 | 4.2 | 0.49 (0.23–1.01) | |
| Medical therapy | 2995 | 2.5 | 4.4 | 0.57 (0.38–0.84) | |
| GP Iib/IIIa inhibitor | | | | | NA |
| Upstream | 6906 | 3.0 | 6.1 | 0.50 (0.40–0.63) | |
| Deferred | 6921 | 3.0 | 5.3 | 0.57 (0.45–0.72) | |
| Randomization to angiography or intervention, thirds | | | | | 0.92 |
| Early (<3.0 hr) | 2918 | 2.9 | 5.4 | 0.54 (0.38–0.78) | |
| Intermediate (3.0–19.7 hr) | 2925 | 2.9 | 4.9 | 0.60 (0.42–0.87) | |
| Late (>19.7 hr) | 2981 | 3.4 | 6.0 | 0.57 (0.40–0.79) | |

unfractionated heparin and those who received enoxaparin had similar 30-day rates of the composite ischemia end point (6.8% and 7.7%, respectively; $P=0.29$), major bleeding (5.9% and 5.5%, $P=0.55$), and the net clinical outcome end point (11.5% and 11.8%, $P=0.75$). Baseline renal insufficiency was associated with an increased rate of hemorrhagic complications with all antithrombotic agents. However, the relative increase in the rate of major bleeding associated with a baseline calculated creatinine clearance of less than 60 ml per minute, as compared with 60 ml per minute or more, was similar among patients receiving enoxaparin, those receiving unfractionated heparin, and those receiving bivalirudin monotherapy (9.5% and 4.4%, 10.1% and 4.9%, and 6.2% and 2.4%, respectively).

DISCUSSION

In this large-scale, prospective, randomized trial involving patients with moderate- or high-risk

acute coronary syndromes who were undergoing early invasive management, the use of bivalirudin plus a glycoprotein IIb/IIIa inhibitor was associated with rates of ischemic and hemorrhagic complications that were noninferior to those associated with the use of heparin (either unfractionated heparin or enoxaparin) plus a glycoprotein IIb/IIIa inhibitor. In contrast, bivalirudin monotherapy, with provisional use of glycoprotein IIb/IIIa inhibitors in less than 10% of patients, was associated with rates of ischemic events that were noninferior to those associated with heparin plus glycoprotein IIb/IIIa inhibition but was associated with a significantly reduced incidence of major bleeding.

Formal subgroup analysis revealed no significant interactions between the primary study end points and numerous important demographic and treatment variables, with the possible exception of the administration of a thienopyridine before angiography or PCI. Although the time from administration of the study drug to angiography was relatively short (reflecting the growing rec-

ognition that clinical outcomes are optimized with rapid catheterization in acute coronary syndromes),²¹ bivalirudin monotherapy was also associated with a significantly lower risk of bleeding and similar rates of ischemia in the subgroup of patients for whom the interval from randomization to angiography or intervention was more than 24 hours.

In approximately 64% of patients, a thienopyridine (clopidogrel in most instances) was already in use or was administered before angiography or PCI. In such patients, the point estimate for composite ischemic events was similar with bivalirudin monotherapy and with heparin plus glycoprotein IIb/IIIa inhibitors. In contrast, the point estimate for adverse ischemic events was slightly greater with bivalirudin monotherapy than with heparin plus glycoprotein IIb/IIIa inhibitors in patients who were not pretreated with a thienopyridine. Information about the exact timing of pretreatment with clopidogrel was not available for all patients, and platelet responsiveness testing was not performed, precluding an in-depth examination of the relationship between inhibition of the P2Y₁₂ platelet receptor and the efficacy of bivalirudin. Moreover, given the borderline statistical significance of the interaction ($P=0.054$) and the risk of a spurious finding from examination of multiple subgroups, caution against overinterpretation is warranted.²² Nonetheless, the administration of a thienopyridine before angiography may be desirable to optimize outcomes with a regimen of bivalirudin monotherapy, an approach that is consistent with experimental observations.^{23,24}

Several limitations of the present study deserve comment. First, the logistic complexities of the trial necessitated an open-label design, which introduced the potential for bias. However, the frequency of the provisional use of glycoprotein IIb/IIIa inhibitors for procedural complications related to PCI among patients in the group receiving bivalirudin monotherapy was nearly identical to that in the double-blind REPLACE-2 trial,⁹ and all endpoint events were adjudicated by an independent committee that was unaware of the treatment assignments.

Second, 59% of the study cohort presented with myocardial infarction without ST-segment elevation, a percentage lower than that in the Superior Yield of the New Strategy of Enoxaparin, Revascularization and Glycoprotein IIb/IIIa Inhibitors (SYNERGY) trial (which specifically recruited only

high-risk patients),¹³ though similar to the percentage in other recent large-scale trials of acute coronary syndromes.^{25,26} Nevertheless, adverse composite ischemic events occurred with nearly identical frequency in patients in the control and bivalirudin-monotherapy groups, even among the highest-risk patients enrolled (i.e., 2449 patients with a TIMI risk score of 5 to 7). Bivalirudin monotherapy was also particularly effective in the subgroup of patients with baseline TIMI risk scores of 0 to 2. However, enrollment criteria were such that 80.1% of this subgroup met the classic high-risk criteria for either positive biomarkers or ST-segment deviation at baseline. The results of the present study do not apply, however, to patients with acute coronary syndromes that are managed either solely with a noninvasive strategy, without diagnostic angiography and intended revascularization, or for a prolonged period (>72 hours) before catheterization. Further study is also required to determine the optimal pharmacologic regimen for patients with severe renal insufficiency (creatinine clearance, <30 ml per minute), who were excluded from enrollment.

Third, as in other recent acute coronary syndrome trials,¹³ a significant proportion of patients were pretreated with either unfractionated or low-molecular-weight heparin before randomization. Protocol procedures limited the rate of intragroup crossovers from treatment before to treatment after randomization to less than 6% in the control group, whereas more than 60% of patients assigned to bivalirudin were exposed to heparin before randomization. Nonetheless, the effects of bivalirudin monotherapy as compared with heparin plus a glycoprotein IIb/IIIa inhibitor were consistent, regardless of whether an antithrombotic crossover occurred, as demonstrated in subgroup analyses.

Fourth, the 25% noninferiority margin that we used may be considered wide. Because the observed rate of ischemic events in the control group was 7.3 percent, an estimated ischemic-event rate as high as 9.1% in the test groups would have been considered noninferior, even though it might be regarded as clinically important. However, given the observed event rates and confidence intervals, there was a 95.0% likelihood that the incidence of composite ischemia in the bivalirudin-monotherapy group is less than 20% higher than the incidence in the control group.

In summary, we found that in patients with

unstable angina or myocardial infarction without ST-segment elevation who were undergoing early invasive management, the rates of ischemic events and bleeding were similar with the use of either bivalirudin or heparin when combined with the planned use of a glycoprotein IIb/IIIa inhibitor. When bivalirudin was used without a glycoprotein IIb/IIIa inhibitor, the frequency of ischemic events was similar to that with heparin plus a glycoprotein IIb/IIIa inhibitor, but the frequency of major bleeding was significantly reduced.

Supported by the Medicines Company and Nycomed.

Dr. Stone reports receiving consulting fees from the Medicines Company, Boston Scientific, Guidant, Abbott, Volcano, St. Jude, and BMS Imaging and lecture fees from the Medicines Company, Boston Scientific, Nycomed, Guidant, Medtronic, and Abbott; Dr. Cox, consulting fees and lecture fees from the Medicines Company, Boston Scientific, Guidant, St. Jude, and Cordis; Dr. Bertrand, consulting fees and lecture fees from Servier and Sanofi-Aventis; Dr. Lincoff, consulting fees from the Medicines Company, Mitsubishi Pharmaceuticals, and Prognostix, lecture fees from the Medicines Company, and grant support from the Medicines Company, Pfizer, and Sanofi-Synthelabo; Dr. Moses, consulting fees from Cordis Johnson & Johnson and lecture fees from AstraZeneca; Dr. White, consulting fees and lecture fees from the Medicines Company and Sanofi-Aventis and grant support from the Medicines Company, Sanofi-Aventis, Procter & Gamble, Schering-Plough, Eli Lilly, Alexion, Merck, Neuren Pharmaceuticals, GlaxoSmithKline, Pfizer, Roche, Fournier Laboratories, and Johnson & Johnson; Dr. Pocock, consulting fees from the Medicines Company; and Dr. Ware, consulting fees from the Medicines Company, Biogen, InfraRedx, and Schering-Plough. Dr. Feit reports having equity interests in the Medicines Company, Johnson & Johnson, and Millennium Pharmaceuticals, and receiving consulting fees from the Medicines Company. Dr. Aylward reports receiving consulting fees and lecture fees from Sanofi-Aventis, Bristol-Myers Squibb and CSL Limited and grant support from the Medicines Company, Sanofi-Aventis, Procter & Gamble, Alexion, Schering-Plough, and Eli Lilly; Dr. Darius, advisory board fees from Nycomed, Sanofi-Aventis, Boehringer

Ingelheim, and Essex Pharma and lecture fees from Sanofi-Aventis, Bristol-Myers Squibb, Nycomed, and AstraZeneca; and Dr. Desmet, consulting fees from Nycomed and grant support from Medtronic, Guidant, and Eli Lilly. Dr. Ebrahimi reports having received consulting fees from the Medicines Company, Sanofi-Aventis, Bristol-Myers Squibb, and Guerbet, having equity interests in the Medicines Company and Sanofi-Aventis, and receiving lecture fees from the Medicines Company, Sanofi-Aventis, and Bristol-Myers Squibb and grant support from Abbott. Dr. Hamon reports receiving advisory board fees from Nycomed, consulting fees from Terumo, Cordis, Guidant, and Biotronik, and lecture fees from Nycomed, Merck, Sanofi-Synthelabo, AstraZeneca, Boston Scientific, Guidant, Terumo, Cordis, Medtronic, and Biotronik; Dr. Rasmussen, advisory board fees and lecture fees from Nycomed; Dr. Rupprecht, consulting fees and lecture fees from Nycomed, GlaxoSmithKline, Eli Lilly, and Sanofi-Aventis; Dr. Hoekstra, consulting fees from the Medicines Company, Sanofi-Aventis, and Schering-Plough, lecture fees from the Medicines Company, Sanofi-Aventis, Bristol-Myers Squibb, and Schering-Plough, and grant support from the Medicines Company and Schering-Plough; and Dr. Mehran, lecture fees from the Medicines Company, Cordis, and Boston Scientific. Dr. Ohman reports receiving consulting fees from the Medicines Company, Sanofi-Aventis, Liposcience, Inovise Medical, Response Biomedical, and Savacor, having equity interest in Medtronic and Savacor, having received lecture fees from Schering-Plough, Bristol-Myers Squibb, and Datascope, and receiving grant support from Schering-Plough, Bristol-Myers Squibb, and Berlex. Drs. Stone, Moses, and Mehran report that grant support from the Medicines Company has been received by the Cardiovascular Research Foundation, a public charity of which they are directors but from which they receive no compensation. Dr. Lincoff reports that grant support from the following sources has been received by the Cleveland Clinic Cardiovascular Coordinating Center, an academic research organization within the Department of Cardiovascular Medicine at the Cleveland Clinic, of which Dr. Lincoff is the director: Alexion, American Bioscience, AstraZeneca, Atherogenics, Aventis, Biosite, Centocor, Converge Medical, Cordis, Eli Lilly, Glaxo Wellcome, GlaxoSmithKline, Guilford, the Medicines Company, Medtronic, Novartis, Orphan Therapeutics, Pfizer, Pharmacia & Upjohn, Phillips, Sankyo, Sanofi, Sanofi-Synthelabo, Scios, Takeda America, and Vasogenix. No other potential conflict of interest relevant to this article was reported.

REFERENCES

- Graves EJ, Kozak LJ. Detailed diagnosis and procedures, National Hospital Discharge Survey, 1996. No. 138. Hyattsville, MD: National Center for Health Statistics, 1998. (DHHS publication no. 98-1799.)
- Mehta SR, Cannon CP, Fox KA, et al. Routine vs selective invasive strategies in patients with acute coronary syndromes: a collaborative meta-analysis of randomized trials. *JAMA* 2005;293:2908-17.
- Braunwald E, Antman EM, Beasley JW, et al. Management of patients with unstable angina and non-ST segment elevation myocardial infarction: a report of the American College of Cardiology/American Heart Association Task Force on Practice Guidelines (Accessed October 30, 2006, at http://www.acc.org/qualityandscience/clinical/guidelines/unstable/unstable_pkt.pdf).
- Braunwald E, Antman EM, Beasley JW, et al. ACC/AHA guideline update for the management of patients with unstable angina and non-ST-segment elevation myocardial infarction — 2002: summary article: a report of the American College of Cardiology/American Heart Association Task Force on Practice Guidelines (Committee on the Management of Patients With Unstable Angina). *Circulation* 2002;106:1893-900.
- Bertrand ME, Simoons ML, Fox KA, et al. Management of acute coronary syndromes in patients presenting without persistent ST-segment elevation. *Eur Heart J* 2002;23:1809-40. [Errata, *Eur Heart J* 2003; 24:485, 1174-5.]
- Moscucci M, Fox KA, Cannon CP, et al. Predictors of major bleeding in acute coronary syndromes: the Global Registry of Acute Coronary Events (GRACE). *Eur Heart J* 2003;24:1815-23.
- Segev A, Strauss BH, Tan M, et al. Predictors and 1-year outcome of major bleeding in patients with non-ST-elevation acute coronary syndromes: insights from the Canadian Acute Coronary Syndrome Registries. *Am Heart J* 2005;150:690-4.
- Rao SV, Jollis JG, Harrington RA, et al. Relationship of blood transfusion and clinical outcomes in patients with acute coronary syndromes. *JAMA* 2004;292:1555-62.
- Lincoff AM, Bittl JA, Harrington RA, et al. Bivalirudin and provisional glycoprotein IIb/IIIa blockade compared with heparin and planned glycoprotein IIb/IIIa blockade during percutaneous coronary intervention: REPLACE-2 randomized trial. *JAMA* 2003;289:853-63. [Erratum, *JAMA* 2003;289:1638.]
- Lincoff AM, Kleiman NS, Kereiakes DJ, et al. Long-term efficacy of bivalirudin and provisional glycoprotein IIb/IIIa blockade vs heparin and planned glycoprotein IIb/IIIa blockade during percutaneous coronary revascularization: REPLACE-2 randomized trial. *JAMA* 2004;292:696-703. [Erratum, *JAMA* 2006;296:46.]

11. Stone GW, Bertrand M, Colombo A, et al. Acute Catheterization and Urgent Intervention Triage strategy (ACUITY) trial: study design and rationale. *Am Heart J* 2004;148:764-75.
12. Antman EM, Cohen M, Bernink PJ, et al. The TIMI risk score for unstable angina/non-ST elevation MI: a method for prognostication and therapeutic decision making. *JAMA* 2000;284:835-42.
13. Ferguson JJ, Califf RM, Antman EM, et al. Enoxaparin vs unfractionated heparin in high-risk patients with non-ST-segment elevation acute coronary syndromes managed with an intended early invasive strategy: primary results of the SYNERGY randomized trial. *JAMA* 2004; 292:45-54.
14. Fuchs J, Cannon C. Hirulog in the treatment of unstable angina: results of the Thrombin Inhibition in Myocardial Ischemia (TIMI) 7 trial. *Circulation* 1995;92: 727-33.
15. Antman EM, McCabe CH, Braunwald E. Bivalirudin as a replacement for unfractionated heparin in unstable angina/non-ST-elevation myocardial infarction: observations from the TIMI 8 trial. *Am Heart J* 2002;143:229-34.
16. The PURSUIT Trial Investigators. Inhibition of platelet glycoprotein IIb/IIIa with eptifibatid in patients with acute coronary syndromes. *N Engl J Med* 1998; 339:436-43.
17. The PRISM-PLUS Study Investigators. Inhibition of the platelet glycoprotein IIb/IIIa receptor with tirofiban in unstable angina and non-Q-wave myocardial infarction. *N Engl J Med* 1998;338:1488-97. [Erratum, *N Engl J Med* 1998;339:415.]
18. The EPISTENT Investigators. Randomised placebo-controlled and balloon-angioplasty-controlled trial to assess safety of coronary stenting with use of platelet glycoprotein-IIb/IIIa blockade. *Lancet* 1998; 352:87-92.
19. ESPRIT Investigators. Novel dosing regimen of eptifibatid in planned coronary stent implantation (ESPRIT): a randomised, placebo-controlled trial. *Lancet* 2000;356:2037-44. [Erratum, *Lancet* 2001; 357:1370.]
20. Benjamini Y, Hochberg Y. Controlling the false discovery rate: a practical and powerful approach to multiple testing. *J R Stat Soc B* 1995;57:289-300.
21. Neumann FJ, Kastrati A, Pogatsa-Murray G, et al. Evaluation of prolonged antithrombotic pretreatment ("cooling-off" strategy) before intervention in patients with unstable coronary syndromes: a randomized controlled trial. *JAMA* 2003; 290:1593-9.
22. Hernandez AV, Boersma E, Murray GD, Habbema JD, Steyerberg EW. Subgroup analyses in therapeutic cardiovascular clinical trials: are most of them misleading? *Am Heart J* 2006;151:257-64.
23. André P, LaRocca T, Delaney SM, et al. Anticoagulants (thrombin inhibitors) and aspirin synergize with P2Y₁₂ receptor antagonism in thrombosis. *Circulation* 2003;108:2697-703.
24. Nylander S, Mattsson C, Ramstrom S, Lindahl TL. Synergistic action between inhibition of P2Y₁₂/P2Y₁ and P2Y₁₂/thrombin in ADP- and thrombin-induced human platelet activation. *Br J Pharmacol* 2004; 142:1325-31.
25. Kastrati A, Mehilli J, Neumann FJ, et al. Abciximab in patients with acute coronary syndromes undergoing percutaneous coronary intervention after clopidogrel pretreatment: the ISAR-REACT 2 randomized trial. *JAMA* 2006;295:1531-8.
26. Yusuf S, Mehta SR, Chrolavicius S, et al. Comparison of fondaparinux and enoxaparin in acute coronary syndromes. *N Engl J Med* 2006;354:1464-76.

Copyright © 2006 Massachusetts Medical Society.

VIEW CURRENT JOB POSTINGS AT THE NEJM CAREERCENTER

Visit our online CareerCenter for physicians at www.nejmjobs.org to see the expanded features and services available. Physicians can conduct a quick search of the public database by specialty and view hundreds of current openings that are updated daily online at the CareerCenter.