

# Cirrhosis and Chronic Liver Failure: Part I. Diagnosis and Evaluation

JOEL J. HEIDELBAUGH, M.D., and MICHAEL BRUDERLY, M.D.  
*University of Michigan Medical School, Ann Arbor, Michigan*

Cirrhosis and chronic liver failure are leading causes of morbidity and mortality in the United States, with the majority of preventable cases attributed to excessive alcohol consumption, viral hepatitis, or nonalcoholic fatty liver disease. Cirrhosis often is an indolent disease; most patients remain asymptomatic until the occurrence of decompensation, characterized by ascites, spontaneous bacterial peritonitis, hepatic encephalopathy, or variceal bleeding from portal hypertension. Physical examination of patients with cirrhosis may reveal a variety of findings that necessitate a hepatic- or gastrointestinal-based work-up to determine the etiology. Some patients already may have had laboratory or radiographic tests that incidentally uncovered signs of cirrhosis and its comorbidities. No serologic or radiographic test can accurately diagnose cirrhosis. A significant correlation has been demonstrated between persistently elevated liver function tests and biopsy-proven underlying hepatic disease; thus, a more targeted serologic work-up is indicated in patients whose liver function test results are persistently abnormal. Unnecessary medications and surgical procedures should be avoided in patients with cirrhosis. Referral for liver biopsy should be considered only after a thorough, non-invasive serologic and radiographic evaluation has failed to confirm a diagnosis of cirrhosis; the benefit of biopsy outweighs the risk; and it is postulated that biopsy will have a favorable impact on the treatment of chronic liver disease. (*Am Fam Physician* 2006;74:756-62,781. Copyright © 2006 American Academy of Family Physicians.)

This is part I of a two-part article on cirrhosis and chronic liver failure. Part II, "Complications and Treatment," appears in this issue of *AFP* on page 767.

► **Patient information:** A handout on cirrhosis and chronic liver failure, written by the authors of this article, is on page 781.

Cirrhosis and chronic liver failure together were the 12th most common cause of death in the United States in 2002, accounting for 27,257 deaths (9.5 per 100,000 persons), with a slight male predominance.<sup>1</sup> Approximately 40 percent of patients with cirrhosis are asymptomatic, and the condition often is discovered during a routine examination with laboratory or radiographic studies, or at autopsy. In 2000, there were 360,000 U.S. hospital discharges related to cirrhosis and liver failure.<sup>1</sup> This article, part I of a two-part series, outlines the diagnosis and evaluation of cirrhosis and chronic liver failure (*Figure 1*). Part II discusses complications and treatment.<sup>2</sup>

Single or multifactorial insults to the liver ultimately lead to cirrhosis, the most common being alcohol abuse, chronic hepatitis C, and obesity with concomitant nonalcoholic fatty liver disease (*Table 1*).<sup>3,4</sup> Nonalcoholic fatty liver disease (NAFLD; formerly known

as nonalcoholic steatohepatitis, or NASH) is an increasingly common cause of liver injury; risk factors include obesity, diabetes, hypertriglyceridemia, and profound weight loss after jejunoileal bypass.<sup>5</sup>

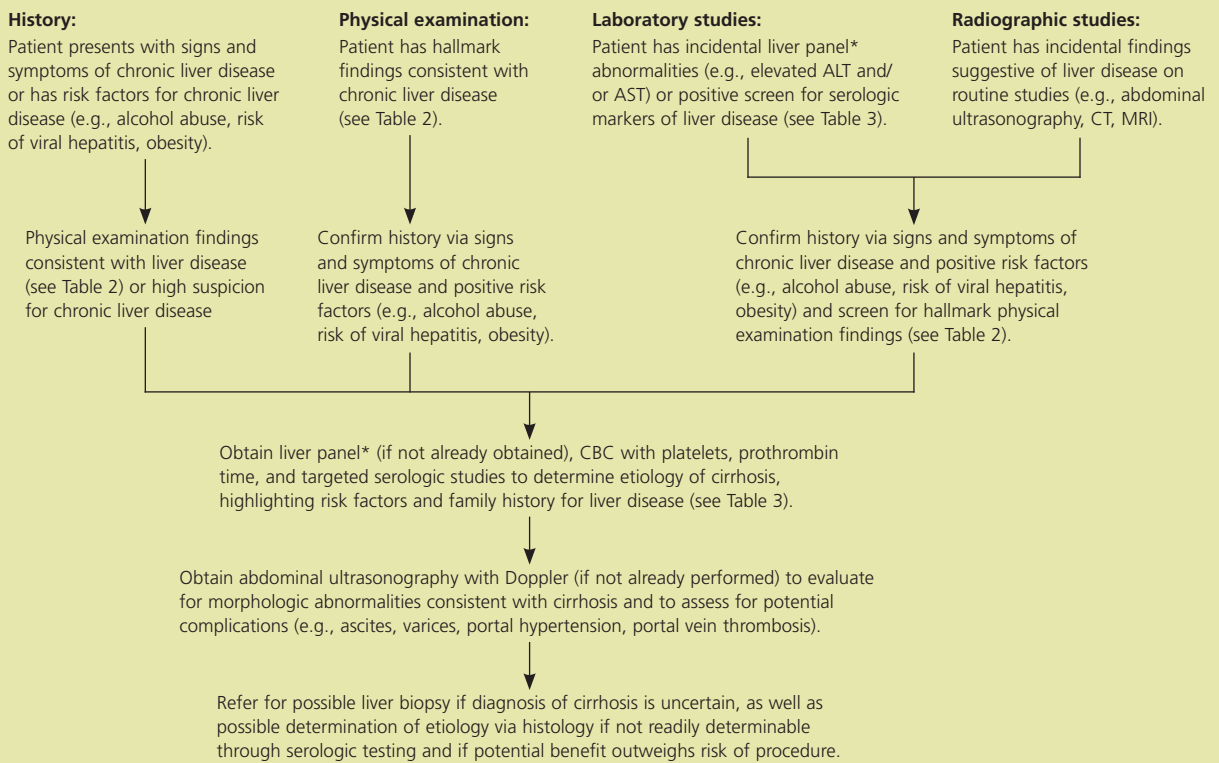
According to estimates from the United Network for Organ Sharing, 75 to 80 percent of cirrhosis cases could be prevented by eliminating alcohol abuse, and approximately 3.9 million Americans have chronic hepatitis C.<sup>6</sup> In August 2005, there were 17,935 persons with cirrhosis (from various etiologies) in the United States who were awaiting a liver transplant.<sup>6</sup> Mortality rates in patients with alcoholic liver disease are considerably higher than in patients with other forms of cirrhosis. The Centers for Disease Control and Prevention estimates that 75,766 deaths and 2.3 million years of potential life lost during 2001 were attributable to excessive alcohol use, an average of approximately 30 years of potential life lost for each alcohol-attributable death.<sup>7</sup>

**SORT: KEY RECOMMENDATIONS FOR PRACTICE**

<i>Clinical recommendation</i>	<i>Evidence rating</i>	<i>References</i>
Although no laboratory test can diagnose cirrhosis accurately, liver function tests, a complete blood count with platelets, and a prothrombin time test should be performed if a liver abnormality is suspected.	C	14
If clinical, laboratory, and radiographic data are inconclusive, but suspicion of cirrhosis remains, a diagnostic liver biopsy should be performed.	C	15, 17
If serum transaminase levels are greater than twice the upper limit of normal or remain elevated for longer than six months, additional serologic studies should be performed to evaluate for various etiologies of cirrhosis. If clinical suspicion for liver disease is high, further serologic work-up is warranted earlier.	C	15
Abdominal ultrasonography is a specific, reliable, noninvasive, fast, and cost-effective test that should be used as a first-line radiographic study for diagnosing cirrhosis.	C	20, 21

A = consistent, good-quality patient-oriented evidence; B = inconsistent or limited-quality patient-oriented evidence; C = consensus, disease-oriented evidence, usual practice, expert opinion, or case series. For information about the SORT evidence rating system, see page 699 or <http://www.aafp.org/afpsort.xml>.

**Diagnosis of Cirrhosis and Chronic Liver Failure**



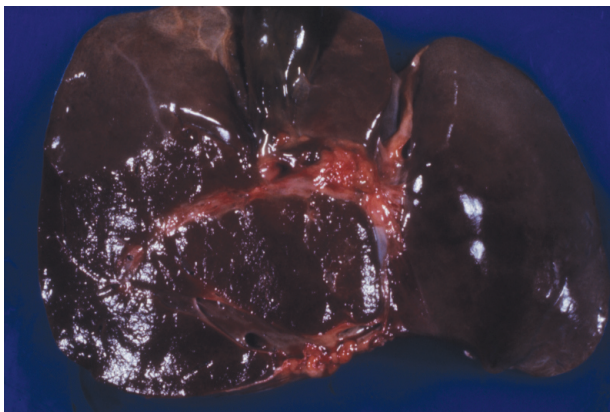
\*—Tests included in standard liver panels vary but typically include the serum enzymes ALT, AST, alkaline phosphatase, and g-glutamyltransferase; total, direct, and indirect serum bilirubin; and serum albumin.

**Figure 1.** Algorithm for the diagnosis of cirrhosis and chronic liver failure. (ALT = alanine transaminase; AST = aspartate transaminase; CT = computed tomography; MRI = magnetic resonance imaging; CBC = complete blood count.)

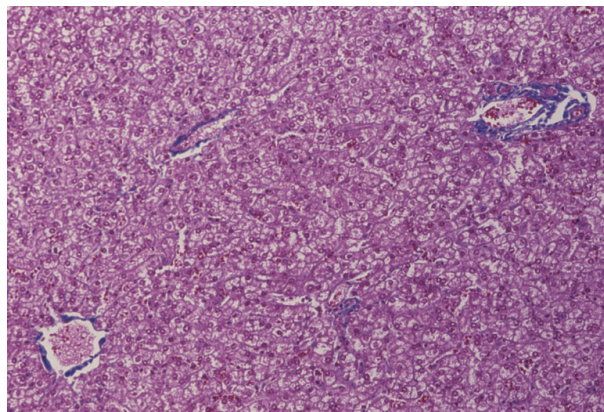
**Definitions and Etiologies**

The liver aids greatly in the maintenance of metabolic homeostasis by processing dietary amino acids, carbohydrates, lipids, and vitamins; metabolizing cholesterol and toxins; producing clotting factors; and storing glycogen.

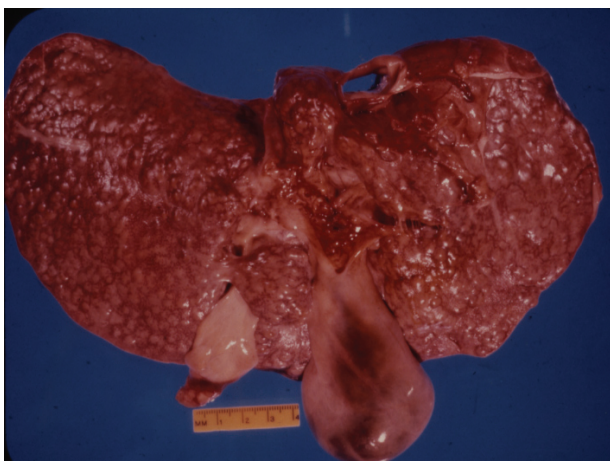
Injury to the liver parenchyma associated with an influx of acute or chronic inflammatory cells is termed hepatitis. Cirrhosis refers to a progressive, diffuse, fibrosing, nodular condition that disrupts the entire normal architecture of the liver (Figures 2 through 4; Table 1).<sup>3,4</sup> Fibrosis



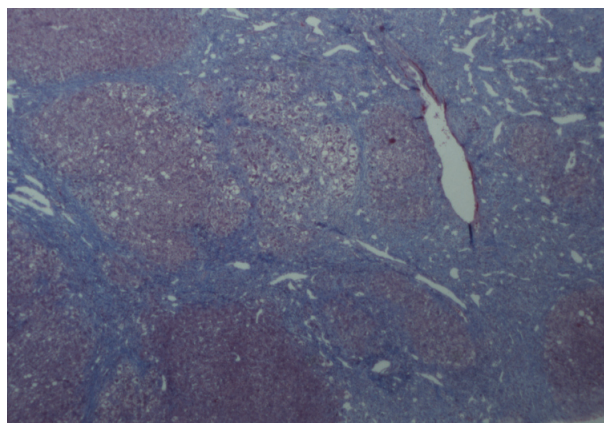
**Figure 2.** Inferior surface of liver, biliary tree, and gallbladder (gross) revealing normal hepatic tissue and structure.



**Figure 4A.** Normal hepatic tissue (microscopic, 10X, trichrome stain).



**Figure 3.** Inferior surface of liver and gallbladder (gross) revealing cirrhotic liver.



**Figure 4B.** Cirrhosis (microscopic, 10X, trichrome stain).

*Photographs courtesy of Henry D. Appelman, M.D., Professor, Department of Pathology, University of Michigan Medical School, Ann Arbor, Mich.*

previously was thought to be an irreversible scarring process formed in response to inflammation or direct toxic insult to the liver, but current evidence suggests that fibrosis may be reversible in some patients with chronic hepatitis B after antiretroviral therapy.<sup>8</sup>

Any chronic insult to the liver can cause progression to cirrhosis. Although numerous pathophysiologic mechanisms of injury exist, the final common pathway is persistent wound healing resulting in hepatic parenchymal fibrosis. In most persons, approximately 80 to 90 percent of the liver parenchyma must be destroyed before liver failure is manifested clinically. When complications of cirrhosis occur, they typically are related to impaired hepatic function or actual physical disruption and reorganization of the liver parenchyma.<sup>3</sup>

## Clinical Presentation

### HISTORY

Cirrhosis often is a silent disease, with most patients remaining asymptomatic until decompensation occurs. Physicians should inquire about risk factors that predispose patients to cirrhosis (Figure 1). Quantity and

duration of alcohol consumption is an important factor in the early diagnosis of cirrhosis.<sup>3</sup> Other risk factors include those for hepatitis B and C transmission (e.g., birthplace in endemic areas, sexual history exposure risk, intranasal or intravenous drug use, body piercing or tattooing, accidental contamination with blood or body fluids), as well as transfusion history and personal or family history of autoimmune or hepatic diseases.<sup>3</sup>

Early and well-compensated cirrhosis can manifest as anorexia and weight loss, weakness, fatigue, and even osteoporosis as a result of vitamin D malabsorption and subsequent calcium deficiency. Decompensated disease can result in complications such as ascites, spontaneous bacterial peritonitis, hepatic encephalopathy, and variceal bleeding from portal hypertension (discussed further in part II<sup>2</sup>). Clinical symptoms at presentation may include jaundice of the eyes or skin, pruritus, gastrointestinal bleeding, coagulopathy, increasing abdominal girth, and mental status changes. Each of these clinical findings is the result of impaired hepatocellular function with or without physical obstruction secondary to cirrhosis. Because hepatic enzyme synthesis is required

TABLE 1

**Etiologies of Hepatic Cirrhosis****Most common causes**

Alcohol (60 to 70 percent)  
 Biliary obstruction (5 to 10 percent)  
   Biliary atresia/neonatal hepatitis  
   Congenital biliary cysts  
   Cystic fibrosis  
 Primary or secondary biliary cirrhosis  
 Chronic hepatitis B or C (10 percent)  
 Hemochromatosis (5 to 10 percent)  
 NAFLD (10 percent)—most commonly resulting from obesity; also can occur after jejunioileal bypass

**Less common causes**

Autoimmune chronic hepatitis types 1, 2, and 3  
 Drugs and toxins  
   Alpha-methyl dopa (Aldomet)  
   Amiodarone (Cordarone)  
   Isoniazid (INH)  
   Methotrexate  
   Oxyphenisatin (Prulet)\*  
   Perhexiline\*  
   Troglitazone (Rezulin)\*  
   Vitamin A  
 Genetic metabolic disease  
    $\alpha_1$ -Antitrypsin deficiency  
   Amino acid disorders (e.g., tyrosinemia)  
   Bile acid disorders  
   Carbohydrate disorders (e.g., fructose intolerance, galactosemia, glycogen storage diseases)  
   Lipid disorders (e.g., abetalipoproteinemia)  
   Porphyria  
   Urea cycle defects (e.g., ornithine carbamoyltransferase deficiency)  
   Wilson's disease  
 Idiopathic/miscellaneous  
   Granulomatous liver disease (e.g., sarcoidosis)  
   Idiopathic portal fibrosis  
   Indian childhood cirrhosis  
   Polycystic liver disease  
 Infection  
   Brucellosis  
   Congenital or tertiary syphilis  
   Echinococcosis  
   Schistosomiasis  
 Vascular abnormalities  
   Chronic, passive hepatic congestion caused by right-sided heart failure, pericarditis  
   Hereditary hemorrhagic telangiectasia (Osler-Weber-Rendu disease)  
 Veno-occlusive disease

NAFLD = nonalcoholic fatty liver disease.

\*—Not available in the United States.

Information from references 3 and 4.

for drug metabolism, heightened sensitivity and medication toxicity may occur in patients with impaired hepatic enzyme synthesis.<sup>3,9</sup>

**PHYSICAL EXAMINATION**

Physical examination of patients with cirrhosis may reveal a variety of findings that should lead to a targeted hepatic- or gastrointestinal-based work-up (Table 2).<sup>10</sup> Many patients will already have had serologic or radiographic tests or an unrelated surgical procedure that incidentally uncovered signs of cirrhosis.

Most patients with cirrhosis severe enough to lead to ascites have additional stigmata of cirrhosis on physical examination. Accurately diagnosing ascites depends upon the amount of fluid present in the abdomen, the technique used to examine the patient, and the patient's habitus. The most useful physical finding in confirming the presence of ascites is flank dullness to

TABLE 2

**Common Physical Examination Findings in Patients with Cirrhosis**

Abdominal wall vascular collaterals (caput medusa)  
 Ascites  
 Asterixis  
 Clubbing and hypertrophic osteoarthropathy  
 Constitutional symptoms, including anorexia, fatigue, weakness, and weight loss  
 Cruveilhier-Baumgarten murmur—a venous hum in patients with portal hypertension  
 Dupuytren's contracture  
 Feter hepaticus—a sweet, pungent breath odor  
 Gynecomastia  
 Hepatomegaly  
 Jaundice  
 Kayser-Fleischer ring—brown-green ring of copper deposit around the cornea, pathognomonic for Wilson's disease  
 Nail changes:  
   Muehrcke's nails—paired horizontal white bands separated by normal color  
   Terry's nails—proximal two thirds of nail plate appears white, whereas the distal one third is red  
 Palmar erythema  
 Scleral icterus  
 Vascular spiders (spider telangiectasias, spider angiomas)  
 Splenomegaly  
 Testicular atrophy

Information from reference 10.

**Patients with numerous large vascular spiders are at increased risk for variceal hemorrhage.**

(shifting dullness) or whether it can be percussed anteriorly. One study found absence of flank dullness to be the most accurate predictor against the presence of ascites; the probability of ascites without flank dullness was less than 10 percent.<sup>11</sup> Approximately 1,500 mL of fluid must be present before dullness is detected on physical examination, whereas routine ultrasonography can detect as little as 50 mL of fluid in the abdomen.<sup>10</sup>

Vascular spiders (spider angiomas, spider telangiectasias) are vascular lesions usually found on the trunk, face, and upper extremities. Although their pathogenesis is incompletely understood, it is believed that their presence in men is associated with an increase in the estradiol to free testosterone ratio.<sup>12</sup> Vascular spiders are not specific for cirrhosis: they also occur during pregnancy, in patients with severe malnutrition, and in healthy persons. The number and size of vascular spiders have been shown to correlate with the severity of chronic liver disease. Patients with numerous large vascular spiders are at increased risk for variceal hemorrhage.<sup>13</sup>

### Laboratory Evaluation

No serologic test can diagnose cirrhosis accurately.<sup>3</sup> The term liver function tests is a misnomer because the assays in most standard liver panels do not reflect the function of the liver correctly.<sup>10</sup> Although liver function tests may not correlate exactly with hepatic function, interpreting abnormal biochemical patterns in conjunction with the clinical picture may suggest certain liver diseases. When a liver abnormality is suspected or identified, a liver panel, a complete blood count (CBC) with platelets, and a prothrombin time test should be performed.<sup>14</sup> Common tests in standard liver panels include the serum enzymes aspartate transaminase (AST), alanine transaminase (ALT), alkaline phosphatase, and  $\gamma$ -glutamyl-transferase; total, direct, and indirect serum bilirubin; and serum albumin. The ALT is thought to be the most cost-effective screening test for identifying metabolic or drug-induced hepatic injury, but like other liver function tests, it is of limited use in predicting degree of inflammation and of no use in estimating severity of fibrosis.<sup>15</sup> One study found that a platelet count of less than 160 K per mm<sup>3</sup> has a sensitivity of 80 percent for detecting cirrhosis in patients with chronic hepatitis C.<sup>16</sup>

A prospective study showed a strong correlation

percussion. When this is detected, it is helpful to determine whether it shifts with rotation of the patient

between liver function test results elevated to greater than twice the upper limit of normal for at least six months and underlying liver disease proved by liver biopsy.<sup>17</sup> Additional serologic studies should be pursued in such circumstances to evaluate for various etiologies of cirrhosis (*Table 3*).<sup>14,15,18,19</sup> If clinical suspicion for liver disease is high, then further serologic work-up is warranted within six months.<sup>15</sup> If a patient has a persistently increased ALT level, viral hepatitis serologies should be assayed. If these are negative, the remaining serologic work-up should include an antinuclear antibodies test or anti-smooth muscle antibody test, or both, to evaluate for autoimmune hepatitis; and a fasting transferrin saturation level or unsaturated iron-binding capacity and ferritin level<sup>18</sup> to evaluate for hereditary hemochromatosis.<sup>15</sup> In patients younger than 40 years in whom Wilson's disease is suspected, serum ceruloplasmin and copper levels should be measured,<sup>19</sup> but screening all patients with chronic hepatic injury for Wilson's disease is not indicated.<sup>15</sup> Primary biliary cirrhosis or primary sclerosing cholangitis should be suspected in patients with chronic cholestasis. Testing for  $\alpha_1$ -antitrypsin (A<sub>1</sub>AT) deficiency may be of benefit in patients with chronic hepatic injury and no other apparent cause. Although the role of A<sub>1</sub>AT deficiency in liver disease in adults is not clearly defined, testing is especially important in neonates with evidence of hepatic injury.<sup>15</sup> Ultrasonography or biopsy is necessary to establish the diagnosis of NAFLD.

### Radiographic Studies

Although various radiographic studies may suggest the presence of cirrhosis, no test is considered a diagnostic standard.<sup>3</sup> The major use of radiographic studies is to detect ascites, hepatosplenomegaly, hepatic or portal vein thromboses, and hepatocellular carcinoma, all of which strongly suggest cirrhosis.

### ULTRASONOGRAPHY

Abdominal ultrasonography with Doppler is a noninvasive, widely available modality that provides valuable information regarding the gross appearance of the liver and blood flow in the portal and hepatic veins in patients suspected to have cirrhosis. Ultrasonography should be the first radiographic study performed in the evaluation of cirrhosis because it is the least expensive and does not pose a radiation exposure risk or involve intravenous contrast with the potential for nephrotoxicity as does computed tomography (CT). Nodularity, irregularity, increased echogenicity, and atrophy are ultrasonographic hallmarks of cirrhosis. In advanced disease, the gross liver appears small and multinodular, ascites may be

TABLE 3

**Clinical Laboratory Studies Used in Diagnosing Chronic Liver Disease**

<i>Etiology</i>	<i>Laboratory tests and results</i>
Alcoholic liver disease	AST:ALT ratio >2* Elevated GGT
$\alpha_1$ -Antitrypsin deficiency	Decreased serum $\alpha_1$ -antitrypsin Genetic screening recommended in equivocal cases
Autoimmune hepatitis (type 1)	Positive ANA and/or ASMA in high titer
Chronic hepatitis B	Positive HBsAg and HBeAg qualitative assays Once HBeAg is negative and HBeAb is positive, HBsAg should be monitored periodically to determine viral clearance. Hepatitis B virus DNA quantification used to document viral clearance Elevated AST and/or ALT*
Chronic hepatitis C	Positive hepatitis C virus antibody qualitative assay HCV RNA quantification used to document viral clearance HCV viral genotype to determine potential response to antiretroviral therapy Elevated AST and/or ALT*
Hepatocellular carcinoma	Elevated alpha fetoprotein, AST, and/or ALT* Elevated ALP with obstruction or cholestasis
Hereditary hemochromatosis	Elevated fasting transferrin saturation, unsaturated iron-binding capacity, or ferritin. A transferrin saturation $\geq 45$ percent or an unsaturated iron-binding capacity 155 mcg per dL (27.7 $\mu\text{mol}$ per L) should be followed by analysis for HFE (hemochromatosis) gene mutations.
Nonalcoholic fatty liver disease	Elevated AST and/or ALT* Ultrasonography or biopsy necessary to establish diagnosis.
Primary biliary cirrhosis and primary sclerosing cholangitis	Diagnosis made via contrast cholangiography, can be supported clinically by positive antimitochondrial antibody (primary biliary cirrhosis) or antineutrophil cytoplasmic antibody (primary sclerosing cholangitis) in high titers. Elevated AST, ALT, and ALP common
Wilson's disease	Serum ceruloplasmin < 20 mg per dL (200 mg per L) (normal: 20 to 60 mg per dL [200 to 600 mg per L]), or low serum copper level (normal: 80 to 160 mcg per dL [12.6 to 25.1 $\mu\text{mol}$ per L]) Basal 24-hour urinary copper excretion > 100 mcg (1.57 $\mu\text{mol}$ ) (normal: 10 to 80 mcg [0.16 to 1.26 $\mu\text{mol}$ ]) Genetic screening recommended in equivocal cases, but must be able to detect multiple mutations in Wilson's disease gene.

AST = aspartate transaminase; ALT = alanine transaminase; GGT =  $\gamma$ -glutamyltransferase; ANA = antinuclear antibody; ASMA = anti-smooth muscle antibody; HBsAg = hepatitis B surface antigen; HBeAg = hepatitis B e antigen; HBeAb = hepatitis B e antibody; HCV = hepatitis C virus; ALP = alkaline phosphatase.

\*—AST and ALT levels may be normal in advanced disease.

Information from references 14, 15, 18, and 19.

detected, and Doppler flow can be significantly decreased in the portal circulation. The discovery of hepatic nodules via ultrasonography warrants further evaluation because benign and malignant nodules can have similar ultrasonographic appearances.<sup>20</sup> A study using high-resolution ultrasonography in patients with cirrhosis confirmed with biopsy or laparoscopy found a sensitivity and specificity for cirrhosis of 91.1 and 93.5 percent, respectively, and positive and negative predictive values of 93.2 and 91.5 percent, respectively.<sup>21</sup>

**CT AND MRI**

CT and magnetic resonance imaging (MRI) generally are poor at detecting morphologic changes associated

with early cirrhosis, but they can accurately demonstrate nodularity and lobar atrophic and hypertrophic changes, as well as ascites and varices in advanced disease. Although MRI sometimes differentiates among regenerating or dysplastic nodules and hepatocellular carcinoma, it is best used as a follow-up study to determine whether lesions have changed in appearance and size.<sup>20</sup> CT portal phase imaging can be used to assess portal vein patency, although flow volume and direction cannot be determined accurately.<sup>22</sup>

Although used rarely, magnetic resonance angiography (MRA) can assess portal hypertensive changes including flow volume and direction, as well as portal vein thrombosis.<sup>22</sup> One study reported that MRI can accurately

## Cirrhosis and Chronic Liver Failure—Part I

diagnose cirrhosis and provide correlation with its severity.<sup>23</sup> Despite the potential of MRI and MRA in the diagnosis and evaluation of patients with cirrhosis, their widespread use is limited by their expense and by the ability of routine ultrasonography with Doppler to obtain adequate information for the diagnosis of cirrhosis and presence of complications.

### Liver Biopsy

Referral for liver biopsy should be considered after a thorough, noninvasive serologic and radiographic evaluation has failed to confirm a diagnosis of cirrhosis; the benefit of biopsy outweighs the risk; and it is postulated that biopsy will have a favorable impact on the treatment of chronic liver disease. The sensitivity and specificity for an accurate diagnosis of cirrhosis and its etiology range from 80 to 100 percent, depending on the number and size of the histologic samples and on the sampling method.<sup>24</sup>

Liver biopsy is performed via percutaneous, transjugular, laparoscopic, open operative, or ultrasonography- or CT-guided fine-needle approaches. Before the procedure, a CBC with platelets and prothrombin time measurement should be obtained. Patients should be advised to refrain from consumption of aspirin and nonsteroidal anti-inflammatory drugs for seven to 10 days before the biopsy to minimize the risk of bleeding.

### The Authors

JOEL J. HEIDELBAUGH, M.D., is a clinical assistant professor in the Department of Family Medicine at the University of Michigan Medical School in Ann Arbor, and medical director of the Ypsilanti (Mich.) Health Center. He attended the State University of New York Health Science Center at Syracuse and completed his residency training at St. Joseph's Hospital Health Center, Syracuse.

MICHAEL BRUDERLY, M.D., is a resident physician in the Department of Family Medicine at the University of Michigan Medical School, where he also received his degree.

*Address correspondence to Joel J. Heidelbaugh, M.D., Ypsilanti Health Center, 200 Arnet, Suite 200, Ypsilanti, MI 48198 (e-mail: jheidel@umich.edu). Reprints are not available from the authors.*

Author disclosure: Nothing to disclose.

### REFERENCES

1. National Center for Health Statistics. National Vital Statistics Report. Chronic liver disease/cirrhosis. Accessed May 2, 2006, at: [www.cdc.gov/nchs/fastats/liverdis.htm](http://www.cdc.gov/nchs/fastats/liverdis.htm).
2. Heidelbaugh JJ, Sherbondy M. Cirrhosis and chronic liver failure. Part II: Complications and treatment. *Am Fam Physician* 2006;74:765-74, 779.
3. Friedman S, Schiano T. Cirrhosis and its sequelae. In: Goldman L, Ausiello D, eds. *Cecil Textbook of Medicine*. 22nd ed. Philadelphia, Pa.: Saunders, 2004:936-44.
4. Crawford JM. Liver and biliary tract. In: Kumar V, Abbas AK, Fausto N, eds. *Robbins and Cotran Pathologic Basis of Disease*. 7th ed. Philadelphia, Pa.: Elsevier Saunders, 2005:877-938.
5. American Gastroenterological Association medical position statement: nonalcoholic fatty liver disease. *Gastroenterology* 2002;123:1702-4.
6. United Network for Organ Sharing. Data. Accessed May 2, 2006, at: [www.unos.org/data/](http://www.unos.org/data/).
7. Centers for Disease Control and Prevention. Alcohol-attributable deaths and years of potential life lost—United States, 2001. *MMWR Morb Mortal Wkly Rep* 2004;53:866-70.
8. Malekzadeh R, Mohamadnejad M, Rakhshani N, Nasseri-Moghaddam S, Merat S, Tavangar SM, et al. Reversibility of cirrhosis in chronic hepatitis B. *Clin Gastroenterol Hepatol* 2004;2:344-7.
9. Diehl A. Alcoholic and nonalcoholic steatohepatitis. Goldman L, Ausiello D, eds. *Cecil Textbook of Medicine*. 22nd ed. Philadelphia, Pa.: Saunders, 2004:935-6.
10. Yee HF, Lidofsky SD. Acute liver failure. In: Feldman M, Friedman LS, Sleisenger MH, eds. *Sleisenger and Fordtran's Gastrointestinal and Liver Disease: Pathophysiology, Diagnosis, Management*. 7th ed. Philadelphia, Pa.: Saunders, 2002:1567-74.
11. Cattau EL Jr, Benjamin SB, Knuff TE, Castell DO. The accuracy of the physical examination in the diagnosis of suspected ascites. *JAMA* 1982;247:1164-6.
12. Pirovino M, Linder R, Boss C, Kochli HP, Mahler F. Cutaneous spider nevi in liver cirrhosis: capillary microscopical and hormonal investigations. *Klin Wochenschr* 1988;66:298-302.
13. Fouch PG, Sullivan JA, Gaines JA, Sanowski RA. Cutaneous vascular spiders in cirrhotic patients: correlation with hemorrhage from esophageal varices. *Am J Gastroenterol* 1988;83:723-6.
14. Dufour DR, Lott JA, Nolte FS, Gretch DR, Koff RS, Seeff LB. Diagnosis and monitoring of hepatic injury. I. Performance characteristics of laboratory tests. *Clin Chem* 2000;46:2027-49.
15. Dufour DR, Lott JA, Nolte FS, Gretch DR, Koff RS, Seeff LB. Diagnosis and monitoring of hepatic injury. II. Recommendations for use of laboratory tests in screening, diagnosis, and monitoring. *Clin Chem* 2000;46:2050-68.
16. Pilette C, Oberti F, Aube C, Rousselet MC, Bedossa P, Gallois Y, et al. Non-invasive diagnosis of esophageal varices in chronic liver diseases. *J Hepatol* 1999;31:867-73.
17. Skelly MM, James PD, Ryder SD. Findings on liver biopsy to investigate abnormal liver function tests in the absence of diagnostic serology. *J Hepatol* 2001;35:195-9.
18. Harrison SA, Bacon BR. Relation of hemochromatosis with hepatocellular carcinoma: epidemiology, natural history, pathophysiology, screening, treatment, and prevention. *Med Clin North Am* 2005;89:391-409.
19. Neimark E, Schilsky ML, Shneider BL. Wilson's disease and hemochromatosis. *Adolesc Med Clin* 2004;15:175-94, xi.
20. American College of Radiology, Expert Panel on Gastrointestinal Imaging. Liver lesion characterization. Reston, Va.: American College of Radiology, 2002.
21. Simonovsky V. The diagnosis of cirrhosis by high resolution ultrasound of the liver surface. *Br J Radiol* 1999;72:29-34.
22. Lomas DJ. The liver. In: Grainger RG, Allison DJ, eds. *Grainger and Allison's Diagnostic Radiology: A Textbook of Medical Imaging*. 4th ed. London, England: Churchill Livingstone, 2001:1247-8.
23. Ito K, Mitchell DG, Hann HW, Kim Y, Fujita T, Okazaki H, et al. Viral-induced cirrhosis: grading of severity using MR imaging. *AJR Am J Roentgenol* 1999;173:591-6.
24. Abdi W, Millan JC, Mezey E. Sampling variability on percutaneous liver biopsy. *Arch Intern Med* 1979;139:667-9.

Reproduced with permission of the copyright owner. Further reproduction prohibited without permission.